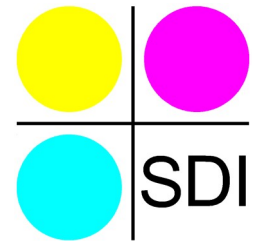


SDI Convert

Graphics file format converter



SDI Convert provides user-friendly conversion of a comprehensive list of 2D graphics file formats commonly found in the oil & gas, aerospace and engineering industries.

SDI Convert performs fast and reliable conversions while maintaining excellent image fidelity. SDI Convert supports a wide range of industry standard vector and raster formats, including PDF, SVG, CGM, TIFF, JPEG and DWG.

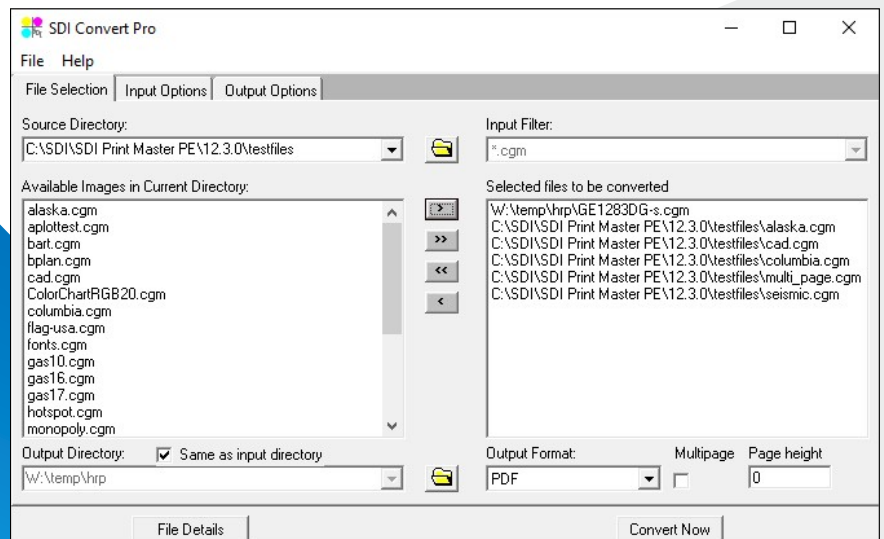
SDI Convert and all SDI graphics products support the following CGM standards: WEBCGM, PIP, CALS, CGM+, S1000D, ATA and MIL-D-28003A.

Input Formats

PDF, SVG, CGM V1-V4, PostScript, EPS, EMF, HPGL, PLT, DWG/DXF, TIFF, JPEG, PNG

Output Formats

PDF, SVG, CGM V1-V4, PostScript, EPS, EMF, DWG/DXF, TIFF, JPEG, PNG



Versions

A **Lite** version is available for users with low volume requirements requiring an economical solution to convert one file at a time.

The **Pro** version supports single and multiple file batch conversion through our graphical user interface.

A **command line version** (CLI) provides powerful customization options for users with larger volume requirements or intending to integrate SDI Convert into their own environment and applications.

Requirements

Operating System: Windows 64-bit

Linux 5x, 6x, 7x (CLI only)

Features

- Convert single or multiple files.
- Document scaling options.
- Rotate output.
- Adjust JPEG output quality.
- AutoCAD® pen tables support.
- Control compression (select raster formats).
- Comprehensive resolution support.